

- Counter Shaft Rear Mount Power Take Off
- Volvo I-Shift, Mack mDrive Transmissions
- Steel Cast Body
- DIN5462 Output
- Heavy Duty Applications
- Forced Lubrication



ABER

Manufacturing Hydraulic Excellence since 1972

Note: ProDrive is constantly engaged in improving its products and, therefore, reserves itself the right to modify without any further notice the characteristics shown in this material.

MODEL NUMBER CONSTRUCTION

TF40 - 34 - AM - P - Z - *

TF40 Series

Code	Internal Ratio
34	1:1.73
36	1:1.35

High Torque Version

Code	Output
A	SAE-B 13T, 2/4 bolts
B	SAE-BB 15T, 2/4 bolts
C	1 1/4" Rd.-5/16" KW
D	1410 comp flange
BLANK	DIN 5462, ISO 4 bolt

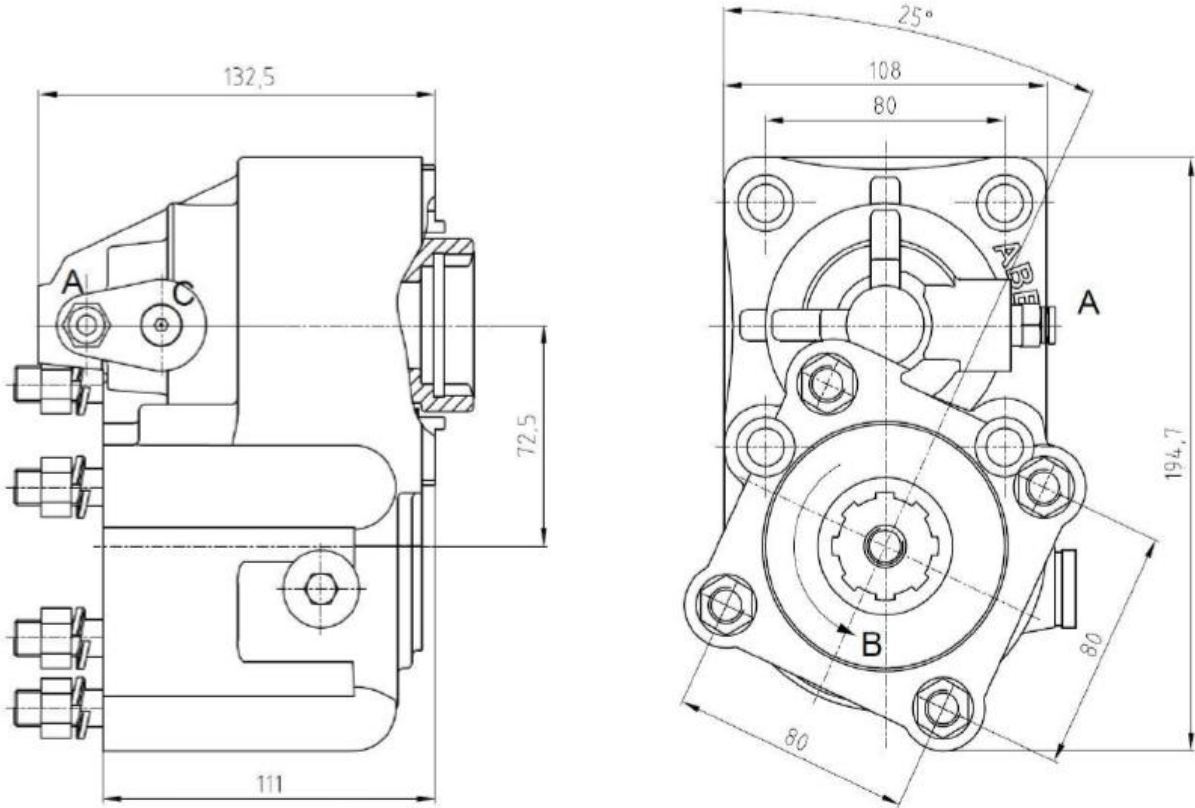
Engagement Sensor

Pneumatic Shifter

Final Speed Ratio - Compared to Engine %

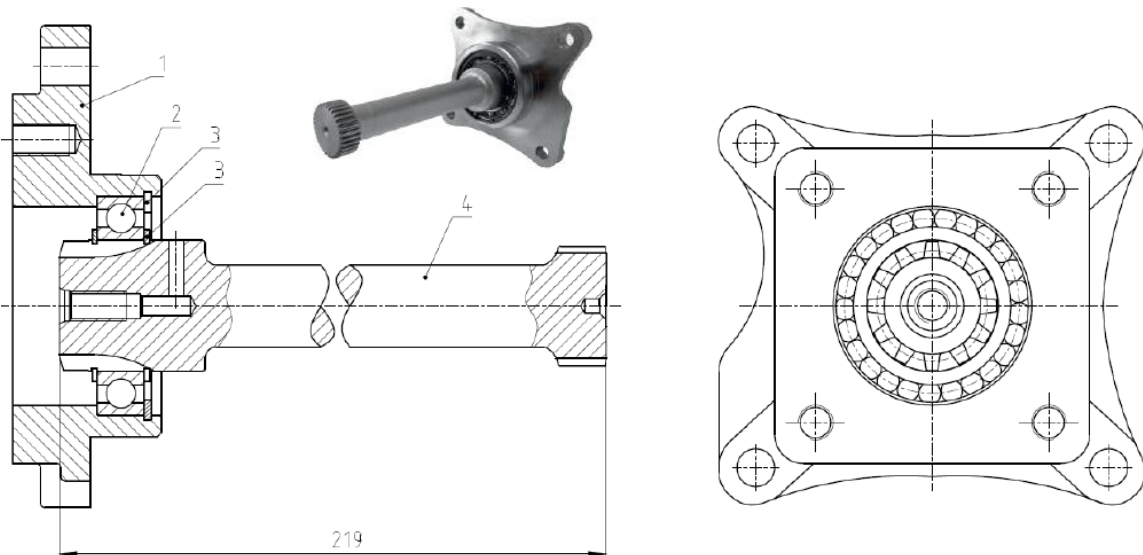
PTO	AMT Overdrive		AMT Direct	
	Low	High	Low	High
TF40-34-AMPZ	156	199	121	156
TF40-36-AMPZ	122	155	95	122

DIMENSIONS (mm) - Standard Components & Performance



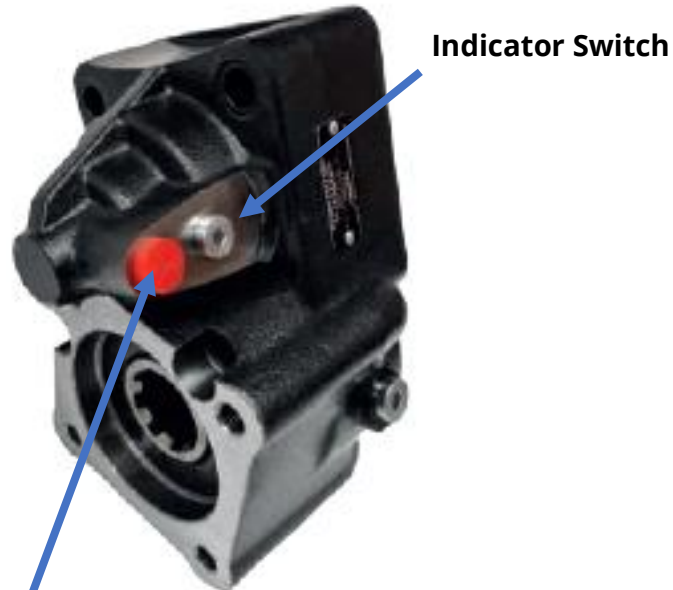
Code	Description
A	Air connection G1/4"
B	Sense of rotation
C	Electric switch

	Ratio 34	Ratio 36
Power @ 1000 RPM	36 kW	46 kW
Max Torque (Nm)	350	450
Weight	11 kg	
Sense of Rotation	Same as Engine Shaft (CCW)	



Installation Instructions

- 1- Mount the indicator switch and air fitting at marked locations

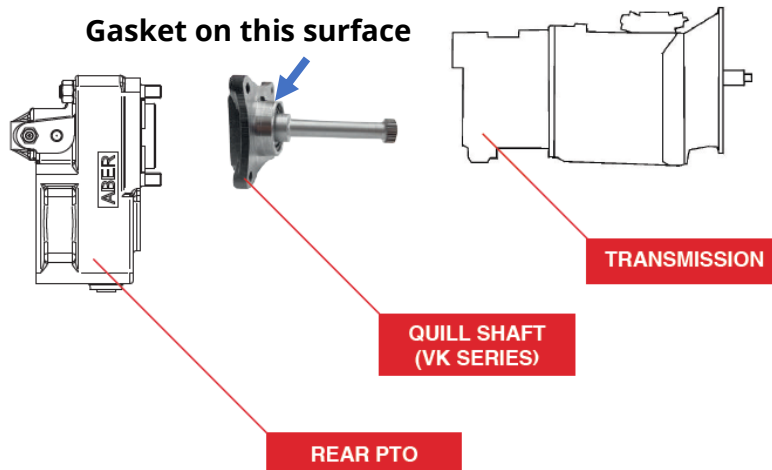


Pneumatic Shifter

Quick Coupling Air Fittings G1/4"

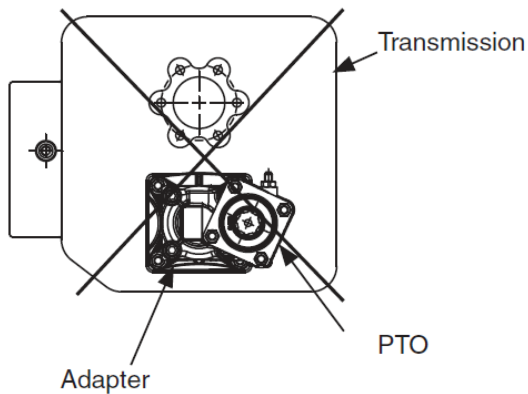
Connect to Air Supply (90 PSI Min.) from OEM Mounted Manifold (Port Labeled "PTO") if using OEM PTO activation switch on the dash.

- 2- Empty transmission oil.
- 3- Quill shaft installation as follow:



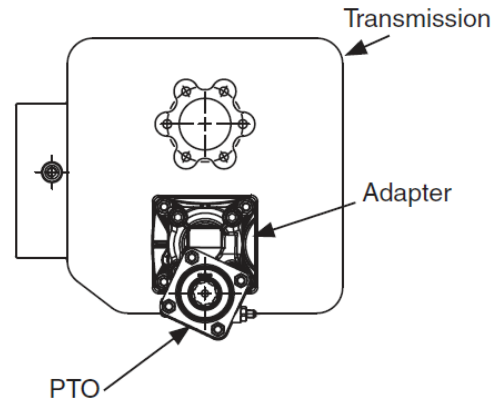
- 4- Remove PTO cover from transmission rear end and clean surface of any oil and residual material.
- 5- Mount the four studs on the transmission using medium strength, thread locking product (such as Loctite 243) to prevent loosening due to vibration. Tighten the mounting bolts to 85 ± 5 Nm (63 ± 4 ft-lb)
- 6- Place gasket on the mating surface before mounting the PTO.
- 7- Mount the assembled PTO following one of the acceptable configurations below:

PTO at 3 O'Clock Position

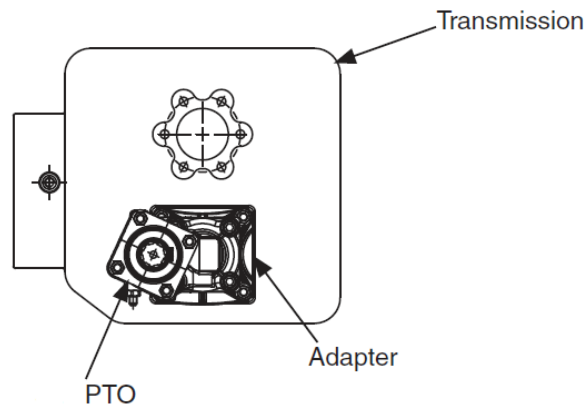


NOTE: PTO Indicator Switch interferes with the main drive line in this position

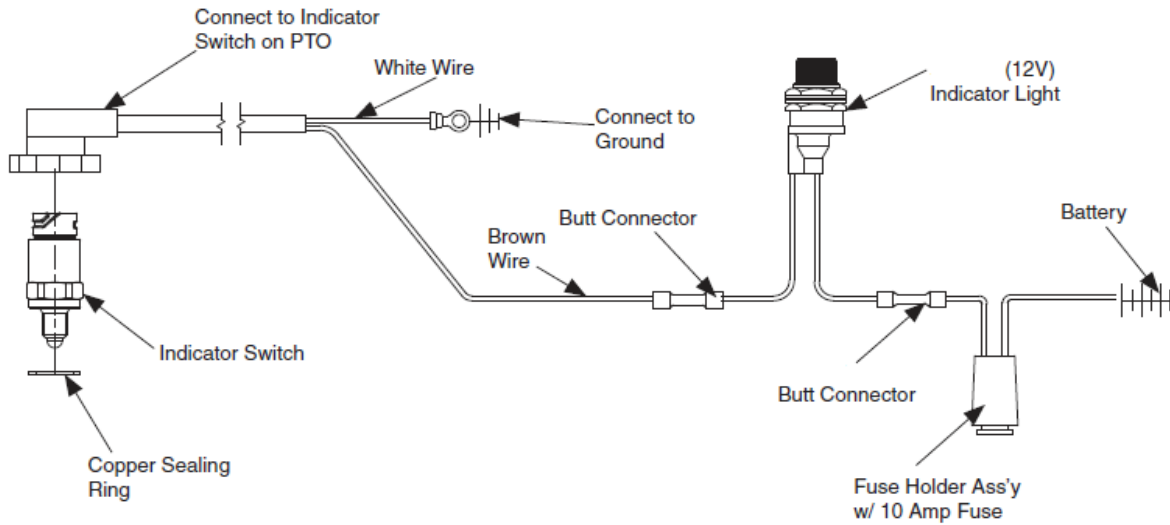
PTO at 6 O'Clock Position



PTO at 9 O'Clock Position



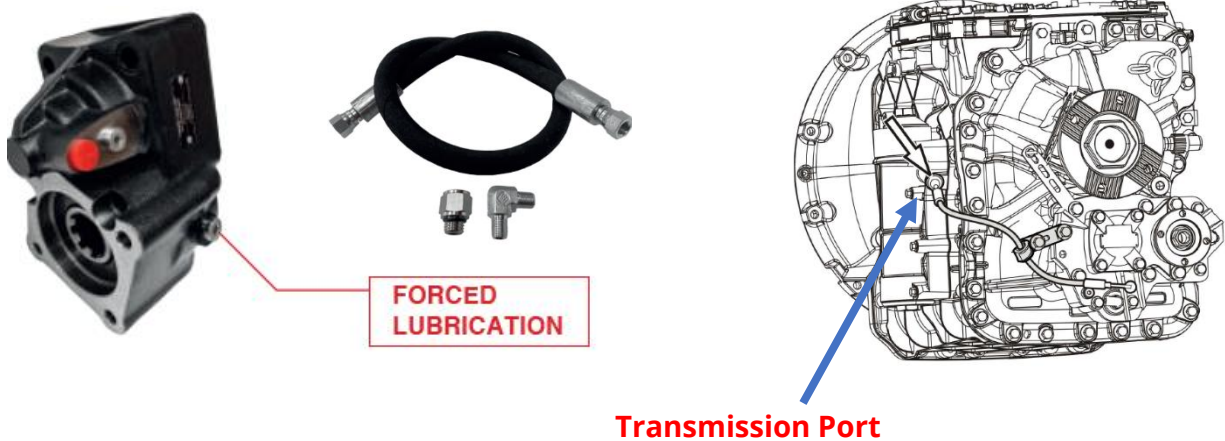
8- Recommended wiring diagram for Indicator switch:



9- Apply anti-fretting, high pressure, high temperature grease on spline before direct mounting any hydraulic pumps.



10- Attached lubrication kit to pto and transmission oil filter plug.



11- Refill transmission oil to OEM specified level before starting truck.

12- Direct Mount Pump Support Requirements:

When the combined weight of the pump and its fittings and hoses weighs 40 lbs (18.1 kg) or more and/or the combined length of the PTO and pump is equal or higher than 18" (457.2 mm) from the PTO centerline, it is necessary for the installer to provide a support bracket at the back of the pump to support its weight.

13- Torque all fasteners using general tightening torque values unless specified in these instructions.

Fastener Size	ft-lb (Nm)
M6 standard bolt 8.8	7±1 (10±1)
M8 standard bolt 8.8	18±3 (24±4)
M10 standard bolt 8.8	35±6 (48±8)
M12 standard bolt 8.8	63±11 (85±15)
M14 standard bolt 8.8	103±18 (140±25)
M16 standard bolt 8.8	140±26 (190±35)

SAFETY



DO NOT check backlash with the engine on. This procedure has to be made with the engine off and the truck blocked with the parking.



DO NOT go under the vehicle if the engine is running.
 DO NOT attempt to work on an installed power take off with the engine running.
 DO NOT operate the controls of the power take off or other driven equipment from underneath the vehicle with the engine running.
 DO NOT operate the controls of the power take off or other driven equipment in any position that could result in getting caught in the moving machinery.

The application of the PTOs must follow all the instructions hereby mentioned in order to assure the safety of all personal working with the equipment including its surroundings, assure a long life to the product and preserve the warranty of the brand. All applications that do not follow the hereby instruction are solely the users responsibility. If there should happen any malfunctioning, it is strictly forbidden the disassembly of the product except if it is being made by a qualified technician of the brand or if there is a special authorization to do that. If this specification should not be followed, all warranties might be lost.