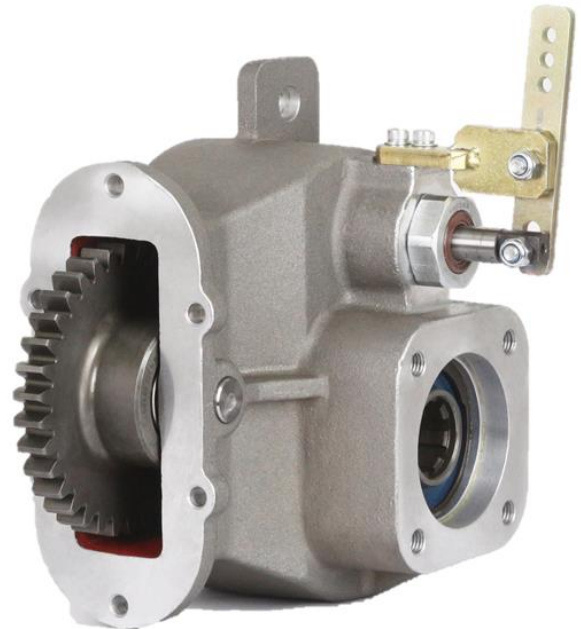




- Side Mount Power Take Off
- Toyota Land Cruiser Gearbox
- Aluminum Cast Body
- Mechanical/Pneumatic Shifter
- Internal Speed Ratio: 1:1.1



Note: ProDrive is constantly engaged in improving its products and, therefore, reserves itself the right to modify without any further notice the characteristics shown in this material.

MODEL NUMBER CONSTRUCTION

PTY - HJ45 - P - A

PTY Series

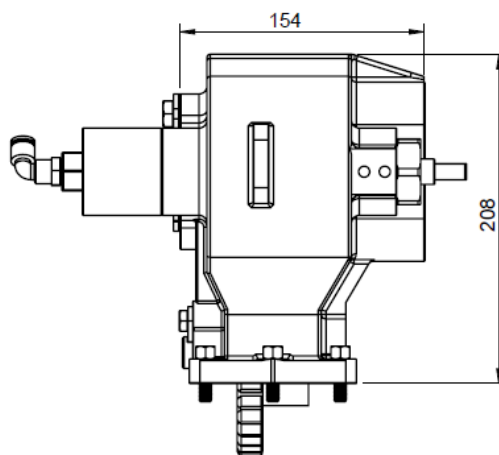
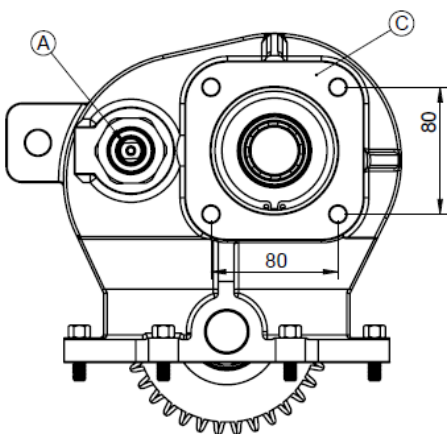
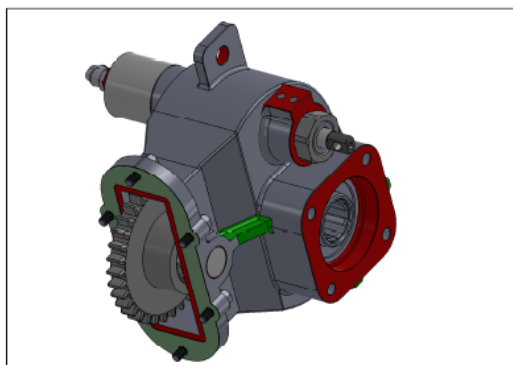
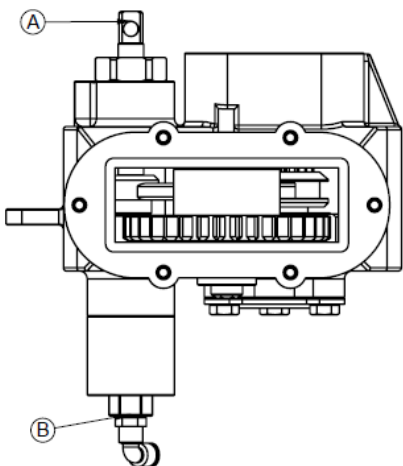
| Code | Gear Data |
|------|---------------------|
| HJ45 | Toyota Land Cruiser |

Mechanical/Pneumatic Shifter

| Code | Output |
|------|---|
| A | DIN 5462 ISO 4 bolt (Standard Output) |
| B | SAE-B 13T, 2 or 4 bolts (DIN to SAE adapter) |
| D | 1410 comp flange (DIN to Flange adapter) |



DIMENSIONS (mm) - Standard Components & Performance



| Code | Description |
|------|------------------------------|
| A | Mechanical Control |
| B | Air Inlet R1/4" |
| C | DIN 5462 8x32836 ISO 4 bolts |

| | Metric | Imperial |
|-------------------|----------------------------|------------|
| Power @ 1000 RPM | 40 kW | 53 hp |
| Max Torque | 382 Nm | 281 lb. Ft |
| Weight | 13 kg | 29 lb. |
| Sense of Rotation | Same as Engine Shaft (CCW) | |