

- Bushing gear pump
- Bi-Directional/Uni-Directional
- Compact Design
- Rear/Side ports
- Easy to mount



Note: ABER is constantly engaged in improving its products and, therefore, reserves itself the right to modify without any further notice the characteristics shown in this material.

MODEL NUMBER CONSTRUCTION

B3 - B4 - C - T - 27

B3 Series

Code	Mounting Pad
4	DIN 5462, 4 bolts
B4	SAE-B 13T, 4 bolts
B24	SAE-B 13T, 2 or 4 bolts
BB4	SAE-BB 15T, 4 bolts

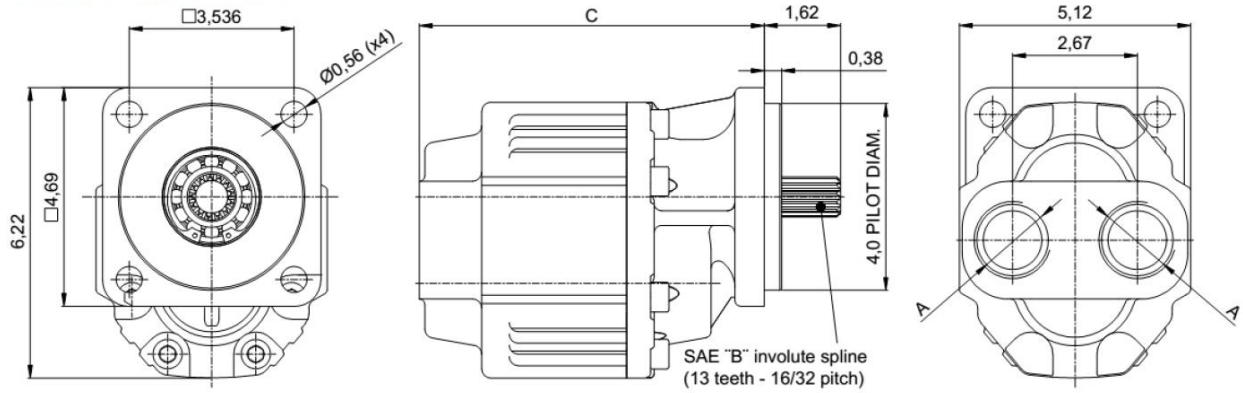
Code	Displacement
C	NPTF threads
O	SAE J514 straight ORB

Code	Inlet & Outlet Ports
T	Rear
GT	Read and Side

Code	Displacement @ 1000 RPM	in3/rev	cc/rev
10	10 gpm	2.3	38
12	12 gpm	2.8	45
14	14 gpm	3.2	52
16	16 gpm	3.7	61
19	19 gpm	4.3	70
22	22 gpm	5.0	82
24	24 gpm	5.6	90
27	27 gpm	6.2	105
31	31 gpm	7.1	115
33	33 gpm	7.6	125

B3B4CT--

Main Dimensions

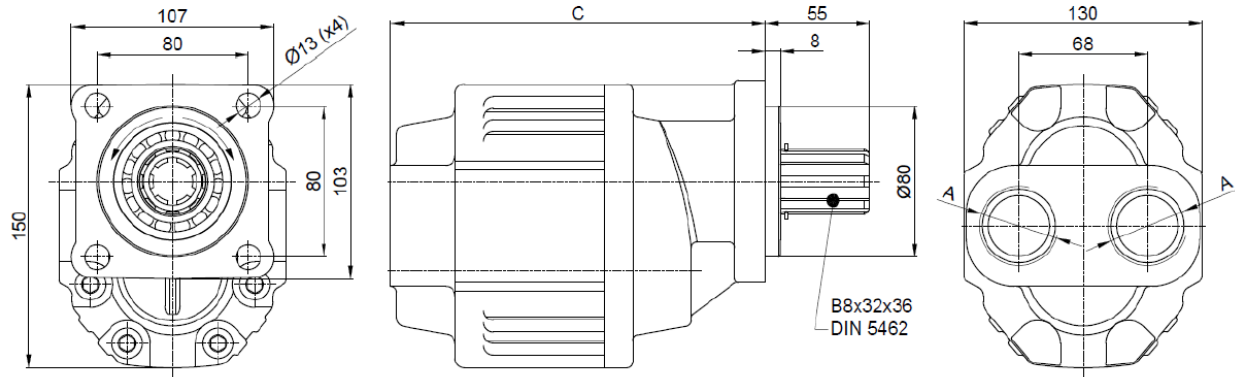


(Dimensions in inch)

Displac.	Max Continuous Pressure	Max Intermittent Pressure	Max Peak Pressure	Speed (RPM)		Weight	Inlet/Outlet	C
				Min	Max			
gpm	(%100)-psi	(6 sec max)-psi	(6 sec max)-psi	Min	Max	lb	NPT	inch
10	4350	4640	4860	500	2600	27	3/4"	6.3
16	3480	3770	3990		2000	29.5	1"	6.9
19	3190	3480	3700		1900	30.5		7.1
22	3045	3335	3553		1800	32	1 1/4"	7.4
27	2755	3045	3263		1600	35		8

B34CT--

Main Dimensions



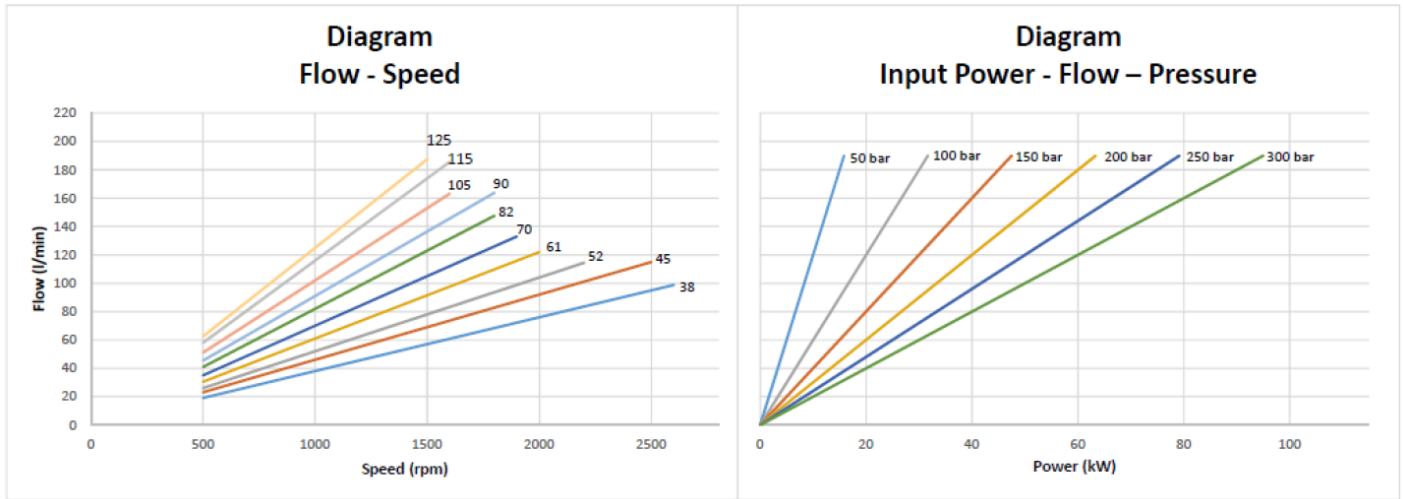
Right hand

Left hand

(Dimensions in mm)

Displac.	Max Continuous Pressure	Max Intermittent Pressure	Max Peak Pressure	Speed (RPM)		Weight	Inlet/Outlet	C
				Min	Max			
gpm	(%100)-psi	(6 sec max)-psi	(6 sec max)-psi	Min	Max	lb	NPT	mm
10	4350	4640	4860	500	2600	24.5	3/4"	171
16	3480	3770	3990		2000	28.2	1"	185
19	3190	3480	3700		1900	29.3		191
22	3045	3335	3553		1800	30.5	1 1/4"	198
27	2755	3045	3263		1600	33.3		213

PERFORMANCE



Flow (LPM)	38	45	52	61	70	82	90	105	115	125
Flow (GPM)	10	12	14	16	19	22	24	27	31	33

Hose dimensions

Inlet Hose	
Flow (l/min)	Internal pipe diameter (inch)
30-40	1"1/4
50-60	1"1/2
70-90	1"3/4
100-120	2"
130-150	2"1/4
160-190	2"1/2
200-230	2"3/4
240-270	3"

Outlet Hose				
Flow (l/min)	Internal pipe diameter (inch)			
	30	1/2"	1/2"	1/2"
40	5/8"	1/2"	1/2"	1/2"
50	5/8"	5/8"	5/8"	1/2"
60	3/4"	5/8"	5/8"	5/8"
70	1"	3/4"	3/4"	5/8"
80	1"	3/4"	3/4"	3/4"
90	1"	1"	1"	3/4"
100	1"	1"	1"	1"
110	1"	1"	1"	1"
120	1"	1"	1"	1"
130	1"	1"	1"	1"
140	1"1/4	1"	1"	1"
150	1"1/4	1"	1"	1"
160	1"1/4	1"1/4	1"	1"
170	1"1/4	1"1/4	1"	1"
180	1"1/4	1"1/4	1"1/4	1"
190	1"1/4	1"1/4	1"1/4	1"
200	1"1/2	1"1/4	1"1/4	1"1/4
210	1"1/2	1"1/4	1"1/4	1"1/4
220	1"1/2	1"1/4	1"1/4	1"1/4
230	1"1/2	1"1/2	1"1/4	1"1/4
240	1"1/2	1"1/2	1"1/4	1"1/4
	50-100	100-150	150-200	200-300
	P (bar)			