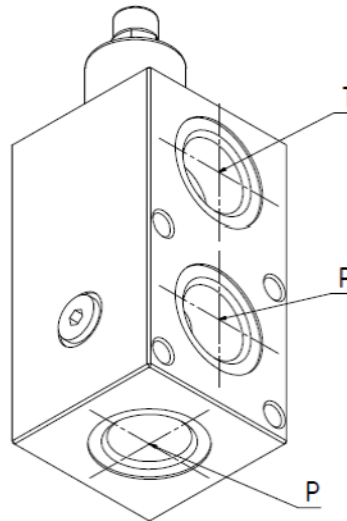
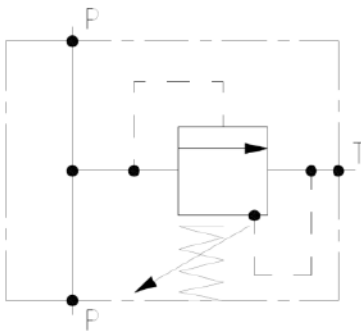
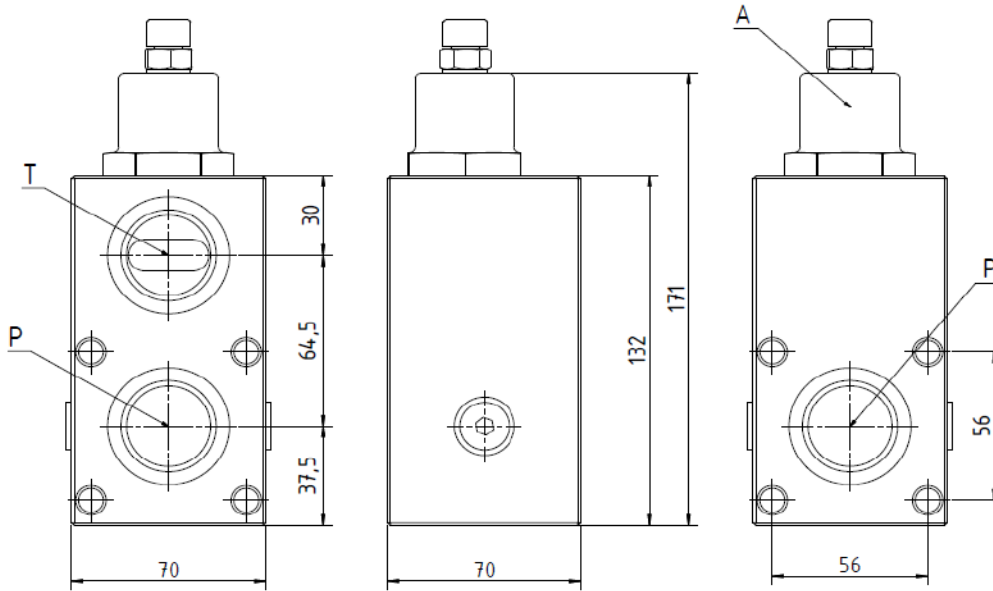


- Model Number: LP150
- Maximum Pressure = 3200 psi
- Flow Rate = 40 GPM
- Aluminum Body



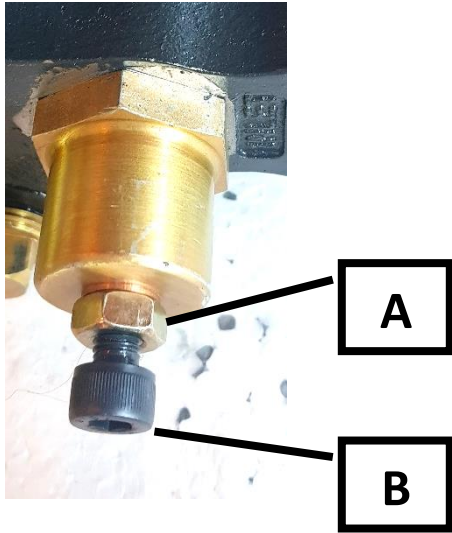
Note: ABER is constantly engaged in improving its products and, therefore, reserves itself the right to modify without any further notice the characteristics shown in this material.



(Dimensions in mm)

Code	Description
A	Cartridge Relief Valve
P	Pump 1" NPT
T	Tank 1" NPT

Relief Setting:



- 1) Unscrew the nut **A**, carefully keeping the hex screw **B**
- 2) Screw **B**, the pressure increases
Unscrew **B**, the pressure decreases
- 3) Pressurize the actuator
Check the pressure with a pressure gauge
If the pressure is OK, move to the next point, if it is not OK repeat the process from point 2
- 4) Depressurize the actuator
- 5) Lock the nut **A** but keeping carefully position to part **B**